

KIRKWALL

<https://www.cruise-orkney.com/>

AIDAsol
DO 13.06. 10:00-16:00

**To Hatston Pier
Liner Berth**
4km / 2.5 miles
from Travel Centre

< 10min
10:00 - 15:15

Walks around the town

- Heritage & Shops
- Coast & Harbour
- Peedie Sea Paths

**Tender
Arrive/Depart
Point**

Points of interest:

- Hatston Pier Cruise Ship Berth
- Orkney Wireless Museum
- Police Station
- Post Office
- Travel Centre & Bus Station
(Shuttle Bus pick-up/drop-off)
- Visitor Information Centre
- Pickaquoey Sports Centre,
Swimming Pool & Cinema
- Library & Archive
- Tankerness House Gardens
- Orkney Museum
- St Magnus Cathedral
- St Magnus Centre
- Supermarkets
- Bishop's Palace
- Earl's Palace
- To Airport
- To Highland Park Distillery

- Chemist/Pharmacy
- Church
- Parking
- Toilets
- Cash Point

- Shuttle Bus Route
- Shopping Area

Sights to see around the town (see map overleaf):



Wireless Museum

Visitor Information Centre and Bus Terminal information on all things Orkney from travel and accommodation to sites of interest, nature & environment and much more. Main bus terminal for transport throughout Orkney Mainland. Free internet access. **t:** +44(0)1856 872856
w: visitorkney.com – **5 6**
open: Mon-Sat 0900-1800 Sun 1000-1600

Orkney Wireless Museum an eclectic collection of domestic radio sets and rare wartime communication equipment. – **2**
w: orkneywirelessmuseum.org.uk **open:** Daily (Sun-1430-1630) **ticket entry**

Orkney Library & Archive provides a wide range of services, many of them free of charge, and welcomes everybody. Free internet access. – **8**
open: Mon-Sat 0915-1700 / Mon & Thu 0915-1900 **donations welcome**

Orkney Museum displays the collected artefacts of Orkney life from over 5000 years to the present day. – **10**
open: Mon-Sat 1030-1700 **donations welcome**

St Magnus Cathedral, built in 1137, with its distinctive sandstone hues, is one of Orkney's most significant landmarks. The Cathedral is owned by the people of Orkney. – **11**
w: stmagnus.org **donations welcome**

St Magnus Centre is a meeting place, a visitor centre, an arts venue and a place for quiet contemplation where you can view the short film "The Saga of St Magnus" which explains the history of the Cathedral. – **12**
t: +44(0)1856 879913
w: www.stmagnus.org **donations welcome**

The Bishop's & Earl's Palaces – an impressive 12th century town house and early 17th century Palace. The Earl's Palace is one of the finest examples of French Renaissance architecture in Scotland. – **14 15**
w: historic-scotland.gov.uk **open:** 0930-1730 **ticket entry**

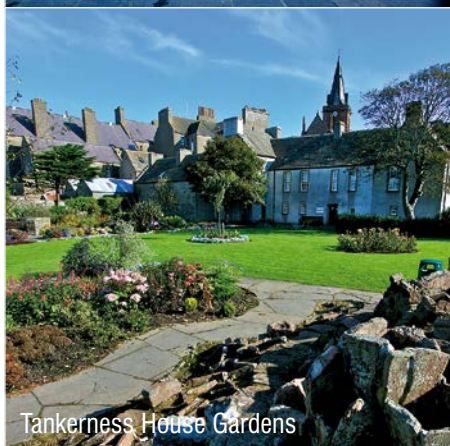
Highland Park Distillery & Visitor Centre a 5 star visitor attraction demonstrating the intricate processes of whisky making. Multi-award-winning Highland Park has been described as "The best spirit in the World". – **17**
t: +44(0)1856 874619 **w:** highlandpark.co.uk **open:** daily 1000-1700 (tours on the hour, please call ahead to check availability).

Tankerness House Gardens a quiet and contemplative space in the centre of town. – **17** **free entry**

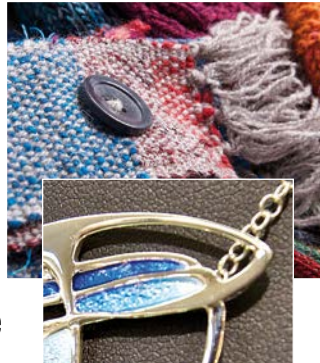
Useful On-line info: ● www.cruise-orkney.com ● www.visitorkney.com
● www.orkney.com ● www.kirkwallbid.co.uk ● www.stromnessorkney.com



The Orkney Museum



Tankerness House Gardens



St Magnus Cathedral



Albert Street, Kirkwall



The Earl's Palace

Shuttle Bus Service

A free shuttle bus service will operate from Hatston Cruise Ship Berth **1** to The Kirkwall Travel Centre **5** regularly, with last shuttle from town 45 minutes prior to cruise departure. Please check with Travel Centre staff if you are unsure.

Shuttle Bus Assembly Point



ORKNEY
ISLANDS COUNCIL

The complimentary shuttle bus is provided by Orkney Islands Council.



Welcome to Kirkwall



English

Walks around the town (see map overleaf):

..... **Heritage & Shops** Through the main streets of Kirkwall you will find a wide range of shops and eating places. Jewellery produced on the islands is particularly evident as is knitwear, arts and crafts. St Magnus Cathedral dominates the skyline and marks the centre of town. Along the streets there are information plaques marking historical points of interest.

..... **Coast & Harbour** The main waterfront of Kirkwall is an ideal way to view some of the town's more recent history as the 'Basin' still provides shelter for crab fishing and other commercial vessels. Kirkwall pier was the main point of entry/exit of cargo to the islands and most of the north isles ferries depart from here.

..... **Peedie Sea Paths** A stroll out of town around the model boat sailing pond where a variety of birds can be seen feeding in the sheltered waters. Much of the land to the west of the Cathedral has been reclaimed from the Peedie Sea.



Kirkwall waterfront

Town guide for cruise passengers

The City and Royal Burgh of Kirkwall is the main town and Capital of the Orkney Islands. First mentioned in the *Orkneyinga Saga* in 1046, the town today has a population of around 8500 and its narrow main street is home to a great selection of shops, cafes, restaurants, hotels and bars.

The Orkney Islands

The gently rolling landscape of Orkney has been a crossroads and safe haven for travellers for thousands of years.

Here you will find some of the most important archeological sites in Europe - Skara Brae, Ring of Brodgar, Standing Stones of Stenness, Maeshowe and the newly discovered 'Neolithic Temple' at the Ness of Brodgar - to name but a few. Nature and the elements dictate the pace of life here. Summer brings a flush of green to the fertile fields and the clear waters which sweep through the 70 or so islands teem with life.

It is this attractive landscape and natural bounty that brought settlers here thousands of years ago and continues to see over 200,000 visitors returning to our shores each year.

Take a little time to discover why our islands are so special; you can be sure that a warm welcome awaits you.

www.cruise-orkney.com

The Ring of Brodgar



Skara Brae