



Bus 742?
Ticket im Bus, oder online (45NOK pP)
<https://177nordland.no/ac/enkeltbillett>
<https://177nordland.no/a/bussrute-aa-i-lofoten-leknes-linje-18-742>
-
<https://lofoten.info/lofoten>
-
<https://lofoten.havn.no/cruisehavn-lofoten/>





Distances From the pier

- To the City Centre of Leknes: 3 km
- To Å: 65 km
- To Svolvær: 72 km

Bus shuttle between the pier and the city-center of Leknes is available at request
(+47 90 02 38 64/+47 90 87 12 83)

— Leknes Port

Practical Information

Bank

There are 2 ATMs available. Sparebank1 on the ground floor at Lofotsenteret shopping mall and Nordlandsbanken in storgata

Pharmacy

Located in Leknes City Center. There are 2 pharmacies available, 1 in the Lofotsenteret shopping mall (ground floor +47 76 06 09 50 and 1 in the Origo Center +47 76 05 57 70).

Opening hours:

Monday-Friday: 09.30am – 5pm

Saturday: 10am – 3pm

Supermarkets sell some pharmacy products as well

Post office

Located at Coop Extra at Lofotensenteret shopping mall

(ref. street map)

Opening hours:

Monday – Saturday: 07 – 23

Stamps are also sold by the pier and in the tourist information office in the Leknes city center

Rentals

Cars, fishing gear and bikes are available for rent, information is available at the Leknes pier or at the tourist information office in the city center

Shopping and restaurants

The city center of Leknes provides a

variety of shopping, specialty shops, cafes and restaurants

Opening hours – shopping*

Monday – Friday: 10 – 17 (10am – 5pm)

Saturday: 10 – 15 (10am – 3pm)

*Opening hours differ from store to store, however the opening hours presented are the guaranteed times of business

Tourist Information

The Tourist Information is situated in the gift shop «Lofoten Gaver og Brukskunst» in Leknes City Centre.

Contact details:

Tel: +47 76 08 75 53

email: vti@online.no

Opening hours:

1.1. – 20.6.

Monday – Friday 09.30 – 16.00

Thursday: 10. – 19

Saturday: 10. – 14

20.6. – 20.8.

Monday – Friday 10.00 – 19.00

Saturday 10.00 – 16.00

Sunday 12.00 – 16.00

13.8. – 31.12.

Monday – Friday 10.00 – 16.00

Thursday: 10.00 – 19.00

Saturday: 10.00 – 14.00

information office in the center of Leknes for further information

Taxi

Information and booking is available at the Leknes pier or call +47 76 08 29 11

Roadside and other churches

Buksnes kirke: 3 kms from the pier

Borge kirke: 17 kms from the pier

Ask at the tourist information office about opening hours

Museums and galleries

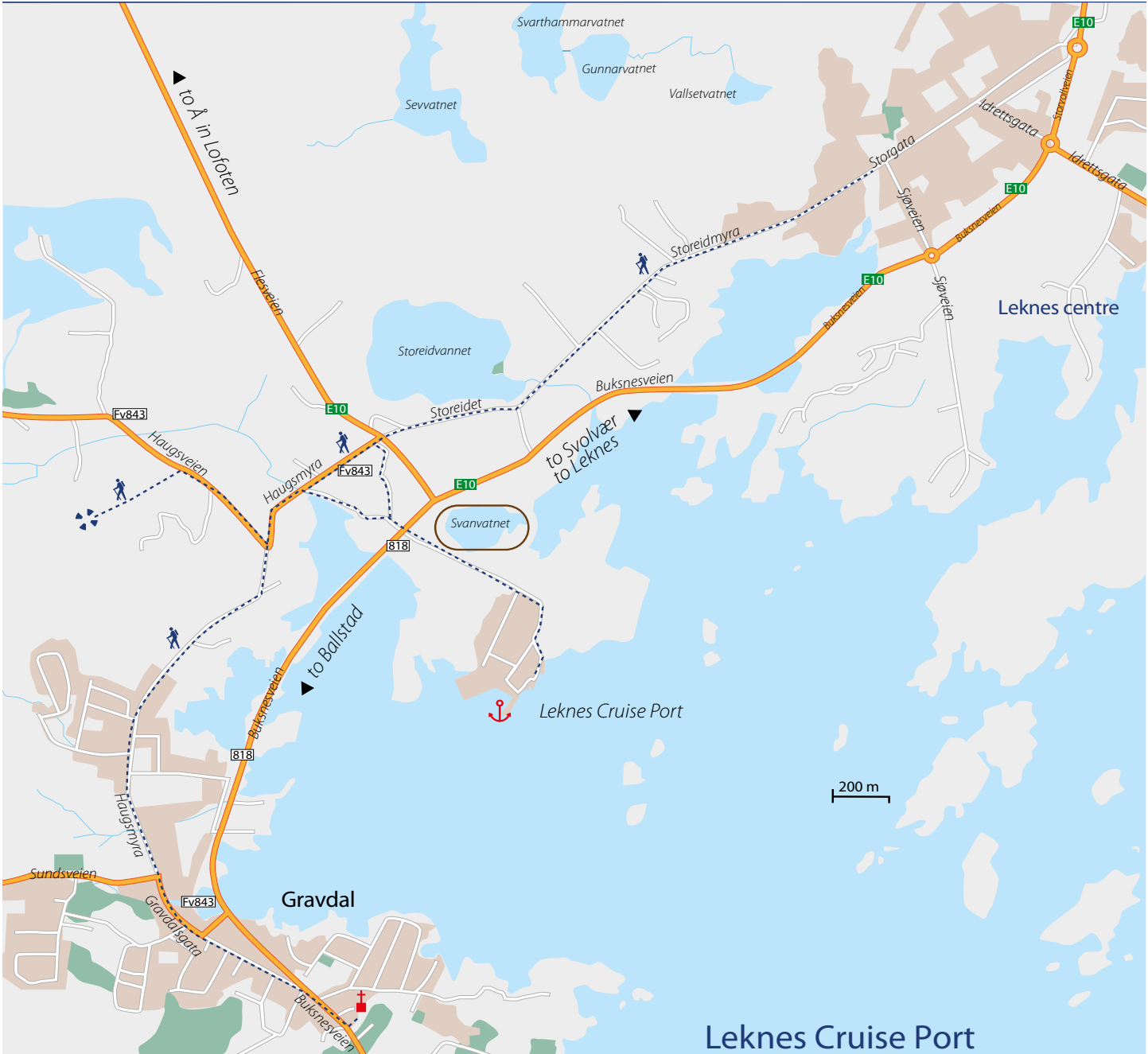
There are several museums and galleries available around the island of Vestvågøy, information is available at the tourist information office in the Leknes city center

Public toilets

There are public toilets available in Leknes City Center.

Sport

The Vestvågøy area is famous for its accessible mountains and great hiking paths for visitors of all ages. The beach and sporting arenas are available not far from the city center of Leknes. Other activities are readily available – please visit the tourist



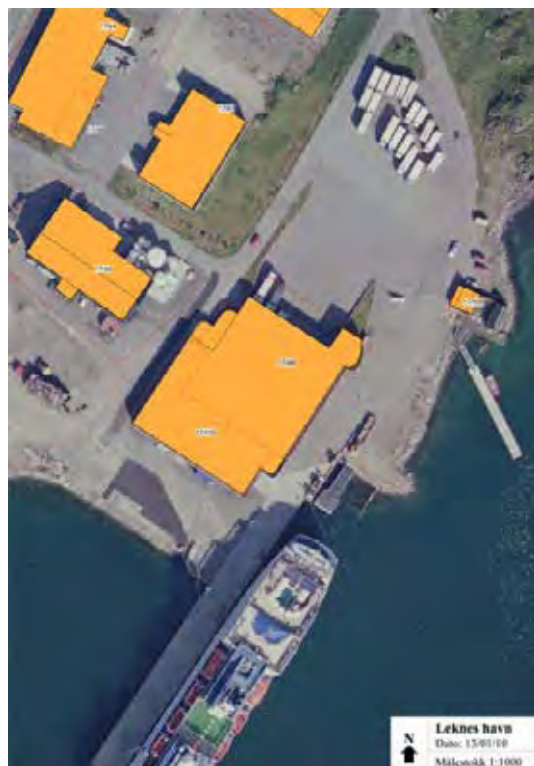
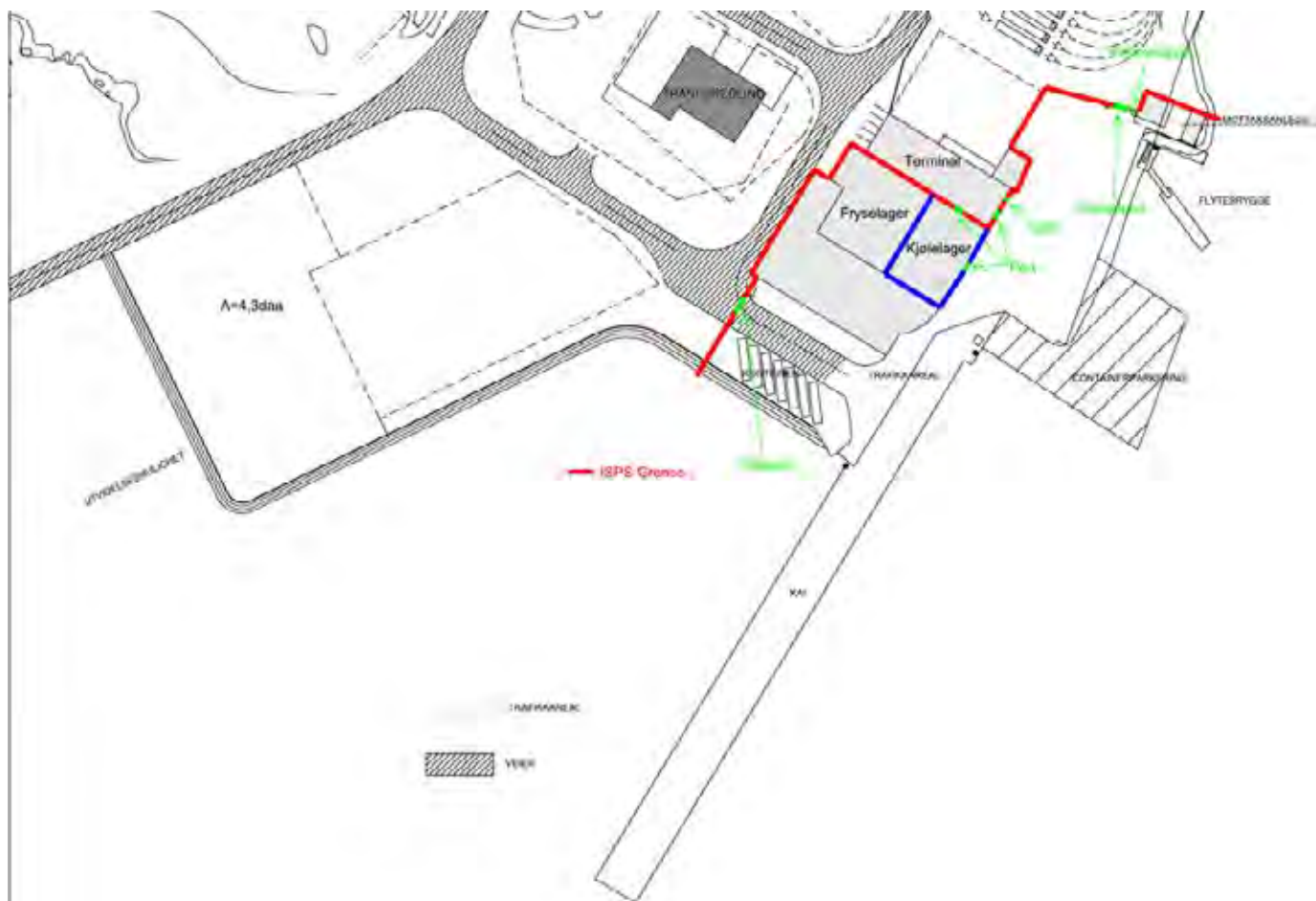


Foto: ©Terje Rakke/ Nordic Life



– Leknes Port

Leknes cruise terminal – year 2018/2019

Port information

Port: Leknes Havn
Country: Norway
Port Authority: Vestvågøy Havnevesen
Security: ISPS- Code implemented,
Port: Leknes Havn

Statement number: NOVY-0001
Telephone: +47 76 05 61 16/
+47 76 05 61 17

E-mail:
havn@vestvagoy.kommune
VHF Ch: 16/12 Operating
hours:
From 1 hr. prior to arrival
Local time:
UTC+1, summer time UTC+2

Port approach:

Eta to be given to Leknes havn.

ISPS requirements:

Pre-arrival information:
Send 24 hrs prior to arrival.
Port Security Officer:
Kjell Jakobsen,
e-mail: Kj@1860.no
ISPS documents:

1. Ship Pre Arrival information
2. Pax list
3. Crew list
4. Disembarking manifest

Berthing information:

Berths:
1 berth, 190 meters long, 8,5 – 14 meter

depth at chart datum. 1 pontoon – dock
for ships tenders, 45 meters long.

Height of berth:
3 meters above MSL (mean sea level).
Height of tender dock: 0,9 meter above
sea level

Tidal difference:
Approximately 1,2 meters
Tugs:

Available with 6 hrs. notice bollard pull
from 20 to 50 tons. Tugs are not compulsory.

Harbour Pilot: Not compulsory

Mooring boat: Available

Gangway:
Ships gangway to be used, no shore side
gangway available.

Terminal facilities:
Information service
Public telephone
Money exchange
Postcards, stamps, souvenirs
Public toilet

Taxis/shuttle service:
Available at the dock. Distance to Leknes
city 3000 meters.

Tour buses:
Are parked at the dock area, approx. 60
meters from the gangway.

Anchorage information:

Anchor position in Buksnesfjorden, at
Captains and Pilots discretion. Norwegian
Chart No.72 has two marked recommen-
dations Shore launches are available, but
ships tenders are recommended. Landing
stage is a floating pontoon, 45 meters long,
with two gangways situated 3000 meters
from town center. There are no specific

speed limitations for ships tenders.

Arrival documents:

Supplies and services:

Lubricants:

Available by drums or smaller quantities
from all major suppliers, some specifica-
tions might need up to 6 hrs. notice.

Fresh water:

From shore side by twin hoses at a rate of
62 tons pr hose. Supplier is equipped with
a variety of types of couplings. Price pr.
Ton is NOK 19,-

Garbage, sewage and sludge:

Dry and wet garbage can be delivered to
shore side containers of 20 M3. Barges are
not available.

Forwarding:

Local airport at Leknes, 4 km from port,
travel time 10 min. Nearest international
airport at Evenes, 245 km from port, trav-
el time approx. 3,5 hrs.

Emergency telephone numbers:

Police:	112
Fire	110
Acute medical assistance:	113
Ambulance:	113

Port security officer:
+47 900 35 379